

LED Moisture room luminaires - Opal diffuser - direct distribution

Ceiling-wall and pendant mounting; Housing made of polycarbonate, captive diffuser fastening clips made of stainless steel, cable entries with cable gland M20 in accordance with the protection rating on the end faces, suspension wires to make installation easier; Housing colour light grey; Light distribution direct distribution by means of Opal diffuser of Polycarbonate, deep-drawn polycarbonate diffuser with opal-prismatic, smooth surface. Multi-lumen driver with 3 adjustable light outputs integrated. Electrical connection via 5-pole connection terminal with plug-in contacts. Feed-through wiring, 5-pole; 2 variable fastening clips of stainless steel and suspension bracket for luminaire mounting also included in the scope of delivery. Swivel mounting bracket SBB to be ordered separately. Chamfered cable entries for boring on the top of the luminaire. Further information on the driver switching stages can be found on the Internet on the product detail page or in the product data sheet under Operating data.

CHARACTERISTICS

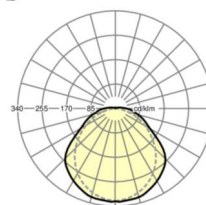
Order number	50132404115
EAN number	4020863447053
Commodity code	94051140
Certification mark	IP 65, Protection class I, F, D, HACCP DIN10500/Food/IFS/BRC, Indoor, CE
Impact resistance (IK rating)	IK08 (-20°C to 35°C)
Ambient temperatur	ta -20°C to 35°C
Warranty period	5 years
State funding programs	BEG - Federal funding for efficient buildings (valid only for Germany)

ELECTRICAL ENGINEERING

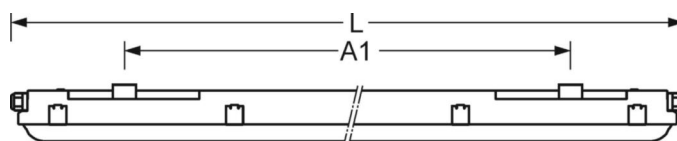
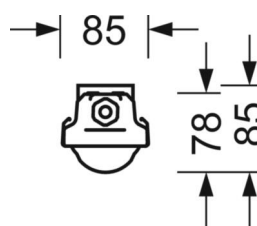
Controller	Electronic multi-lumen driver, 3-steps (1 pcs.)
Wiring	5x1.5mm ² , throughwired, plug-in contact for 5x1.5qmm
System output	33W-23W
Mains voltage	230V/50Hz
Circuit breakers (inrush current)	31 pieces/B10, 50 pieces/B16, 52 pieces/C10, 85 pieces/C16
Energy efficiency class/light source	C

LIGHTING TECHNOLOGY

Placement	LED, Colour rendering/Light colour CRI ≥ 80 / 4000K
Colour tolerance (MacAdam)	4SDCM
Photobiological safety (Luminaire)	RG1
Nominal luminous flux/switching steps (rounded)	4800lm/33W, 4200lm/29W, 3500lm/23W (Standard setting 4763lm)
LED service life	50000h L70/B10 (Tq 35°C), 50000h L80/B50 (Tq 25°C)
Luminaire luminous efficiency	150lm/W-145lm/W
UGR lat./long.	24.2 / 23.5 (33W)

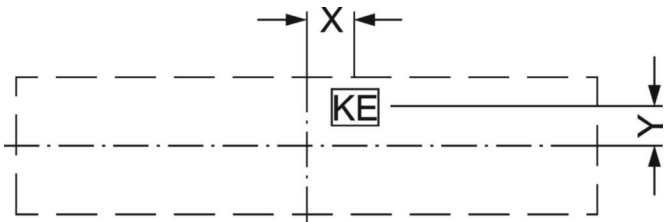
DEEP-LINK
<https://www.regiolux.de/en/article/50132404115>


Reference	LED 4800lm/33W 840
ηLB	100 %
Φ ↓/↑	96 % / 4 %
UGR lat./long.	24.2 / 23.5



MECHANICS

Housing colour	light grey
Dimensions (LxWxH)	1240mm x 85mm x 78mm
Weight (net)	1.61kg
Cable entry KE	Further cable entries can be broken out at the end face and on the rear
Type of installation	Ceiling-mounted single installation, Pendant individual mounting, Wall mounting, Schwenkmontage-Decken-/Wandanbau, Pendulum mounting rail assembly on chain, Ceiling-mounted mounting rail installation



Dimensions

L	1240 mm	Length
B	85 mm	Width
H	78 mm	Height
A1	850 mm	Mounting distance single mounting

OPERATING DATA

LIGHT COLOUR 840

	switching step 1	switching step 2	switching step 3
Luminous flux (lm)	4763	4231	3482
Output (W)	32.8	28.7	23.2
lm/W	145	147	150
UGR I/q	24,2/23,5	23,8/23,1	23,1/22,4
Light density (cd/m²)	10030	8909	7332
Lifetime 1	50000h L70/B10 (Tq 35°C)	50000h L70/B10 (Tq 35°C)	50000h L70/B10 (Tq 35°C)
Lifetime 2	50000h L80/B50 (Tq 25°C)	50000h L80/B50 (Tq 25°C)	50000h L80/B50 (Tq 25°C)

The column highlighted in color indicates the factory default setting. Please refer to the warranty conditions in the characteristics listed above.